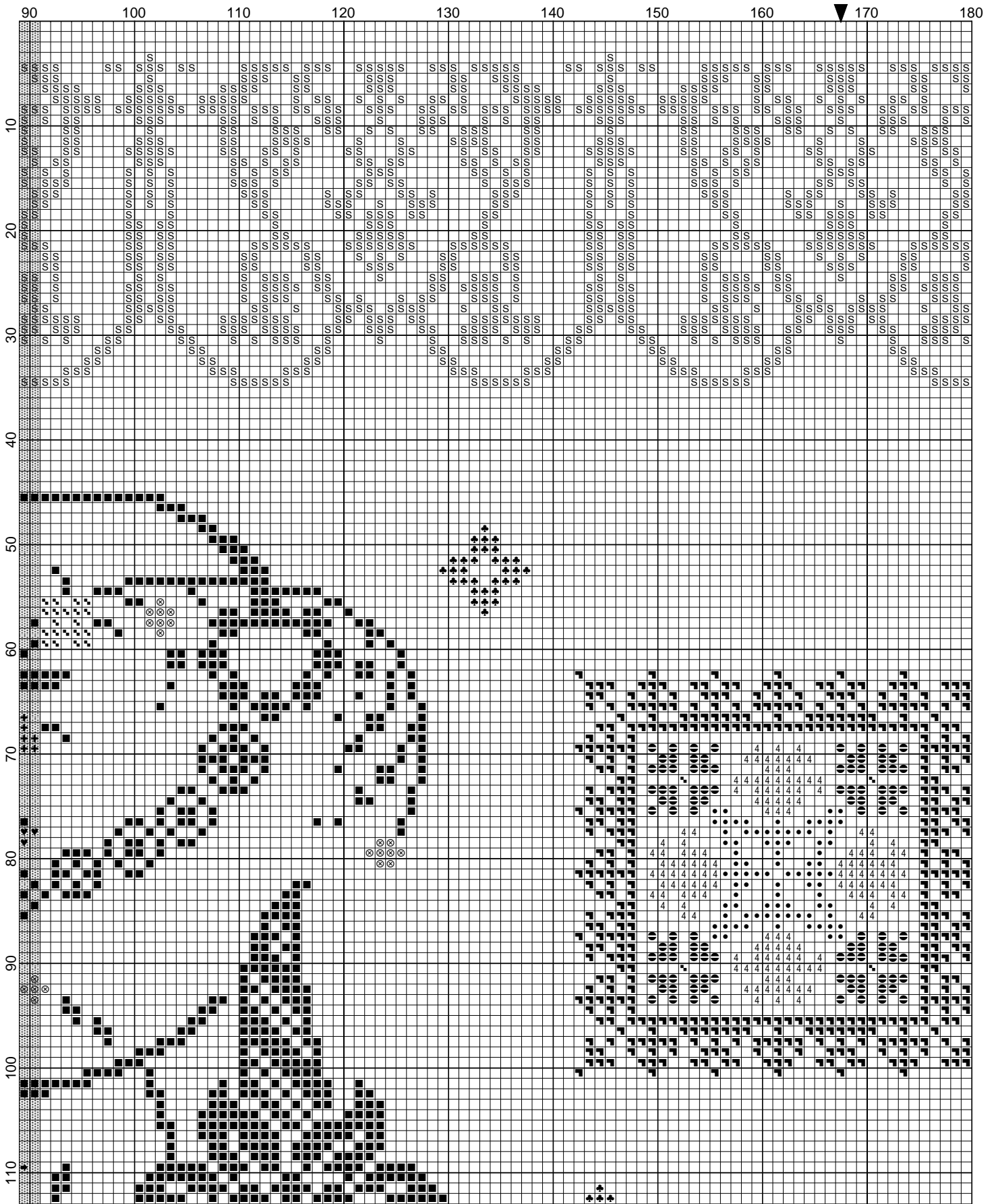


G is For Garden Sampler by S Twillman



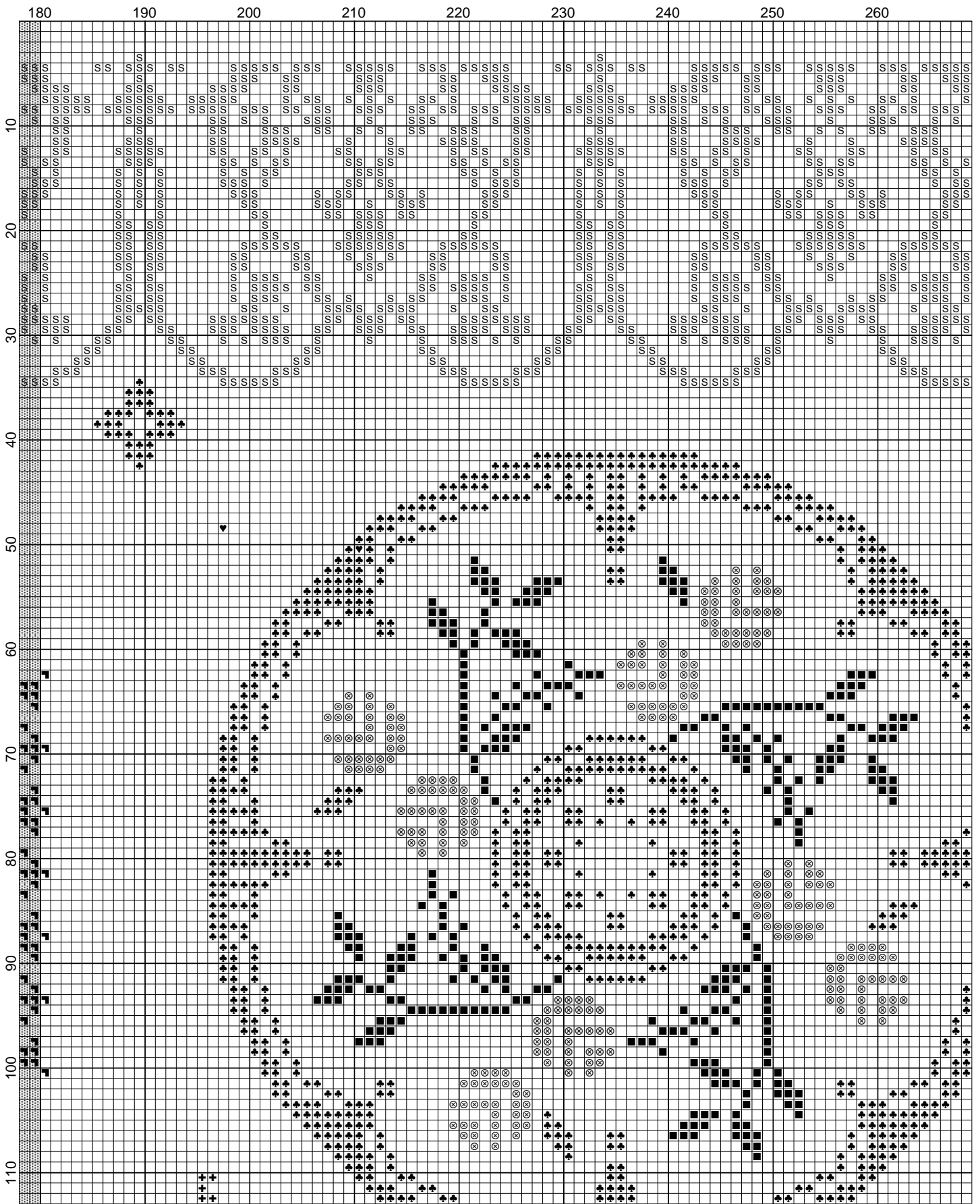
, Licensed to: Stephanie

G is For Garden Sampler by S Twillman



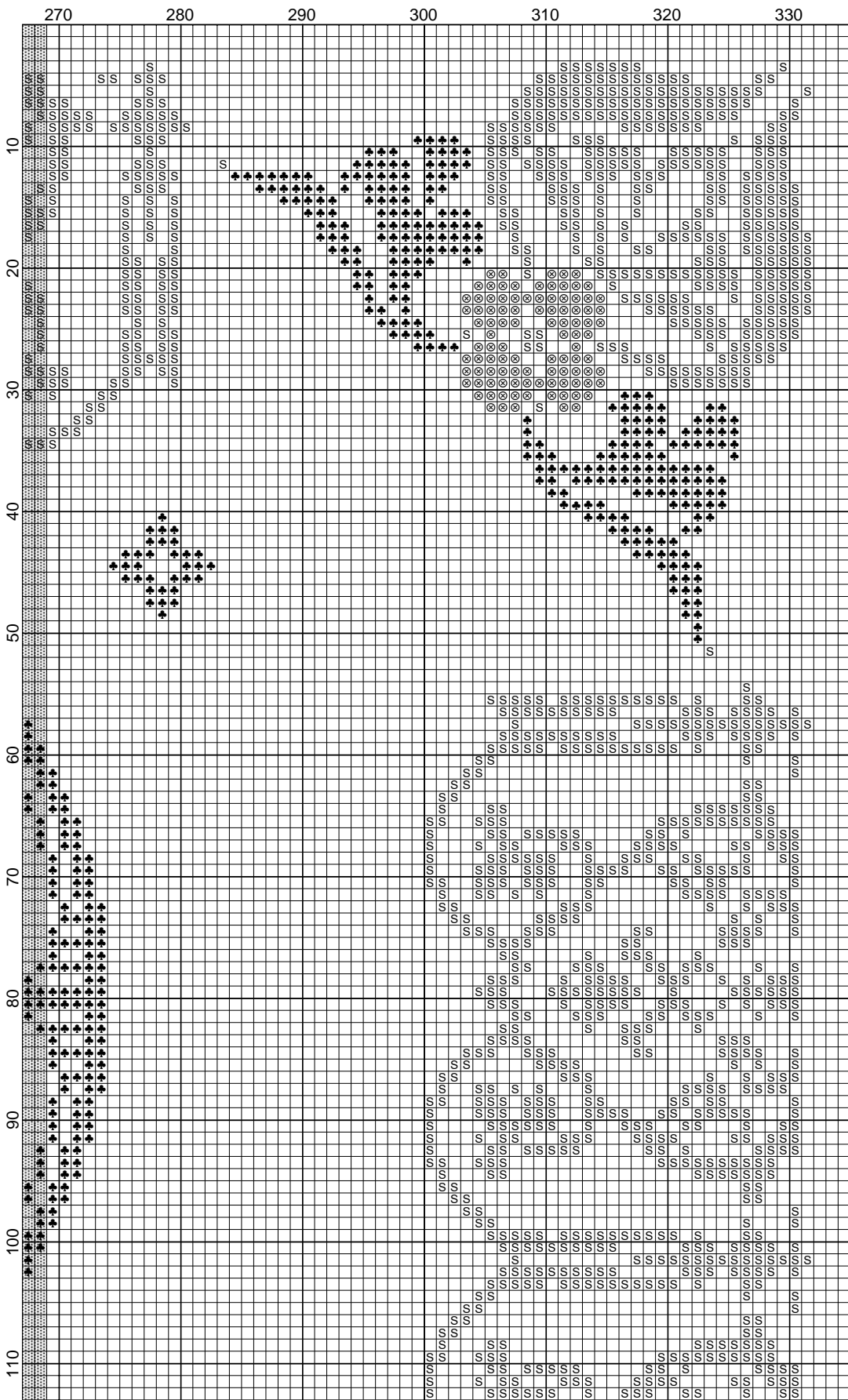
, Licensed to: Stephanie

G is For Garden Sampler by S Twillman



, Licensed to: Stephanie

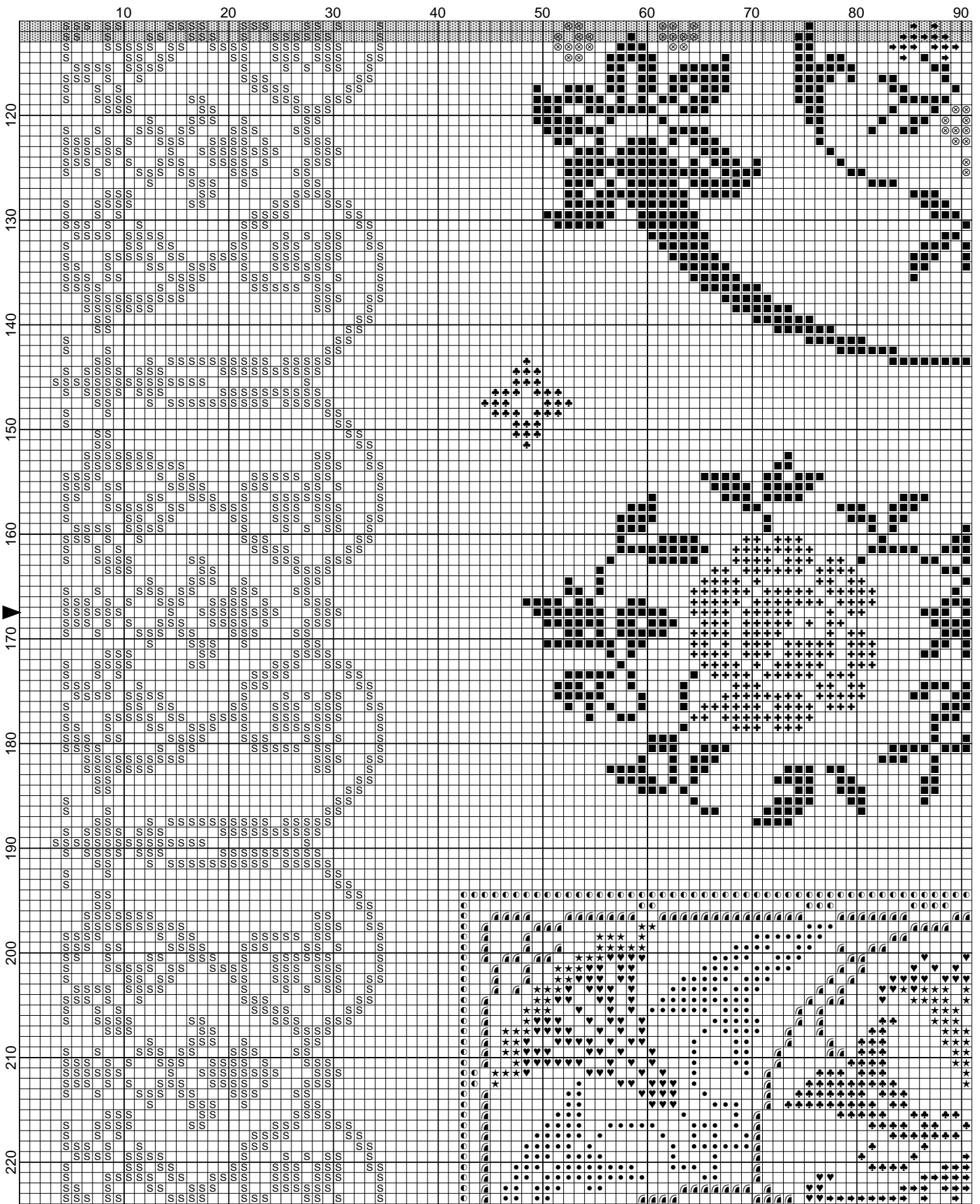
G is For Garden Sampler by S Twillman



- Legend:
- DMC-3325
 - DMC-3755
 - DMC-334
 - DMC-322
 - DMC-3042
 - DMC-3041
 - DMC-3726
 - DMC-316
 - DMC-3727
 - DMC-3052
 - DMC-3051
 - DMC-371
 - DMC-370
 - DMC-833
 - DMC-831
 - DMC-3012
- Backstitches:
- DMC-3726
 - DMC-3051

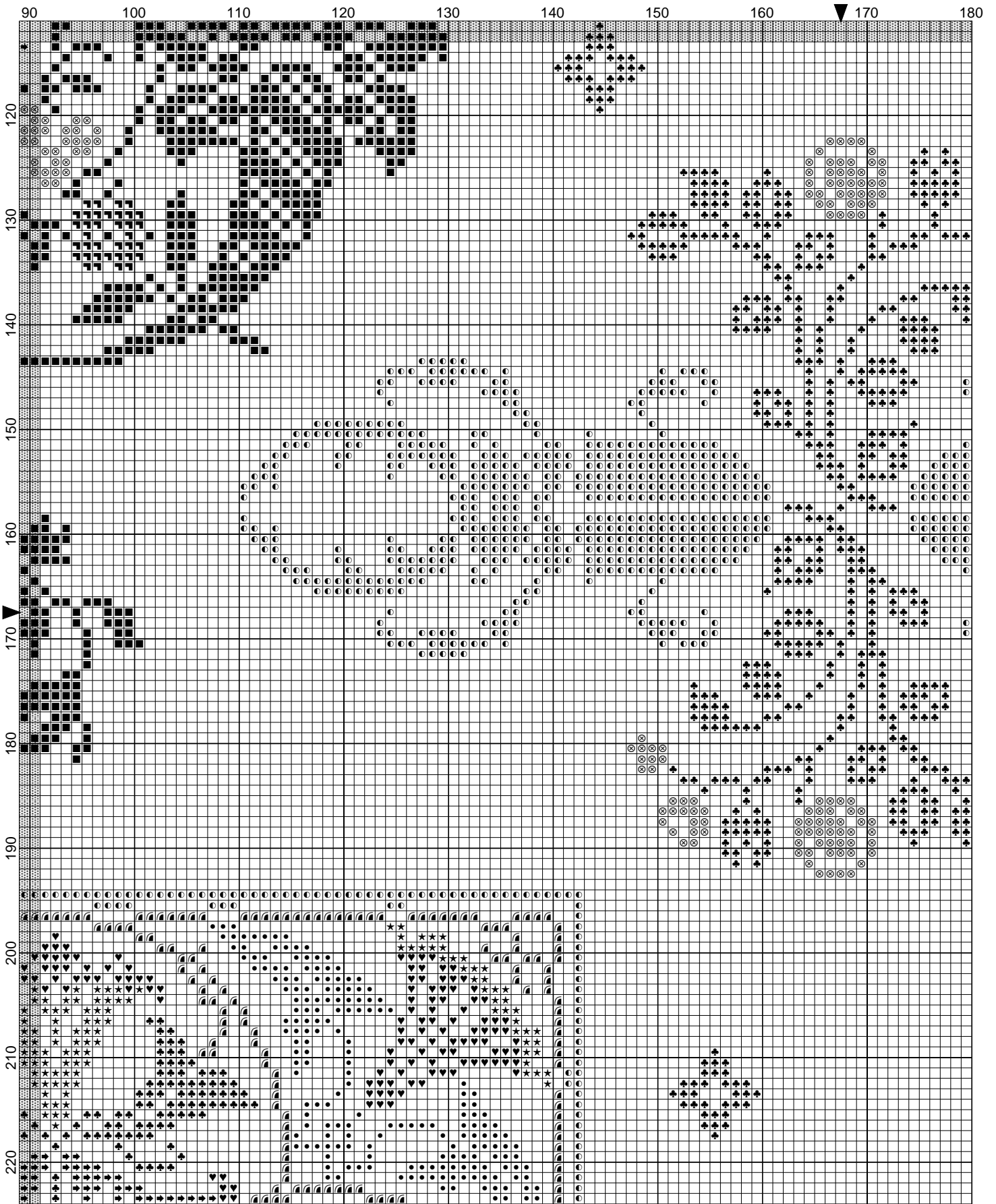
, Licensed to: Stephanie

G is For Garden Sampler by S Twillman



, Licensed to: Stephanie

G is For Garden Sampler by S Twillman



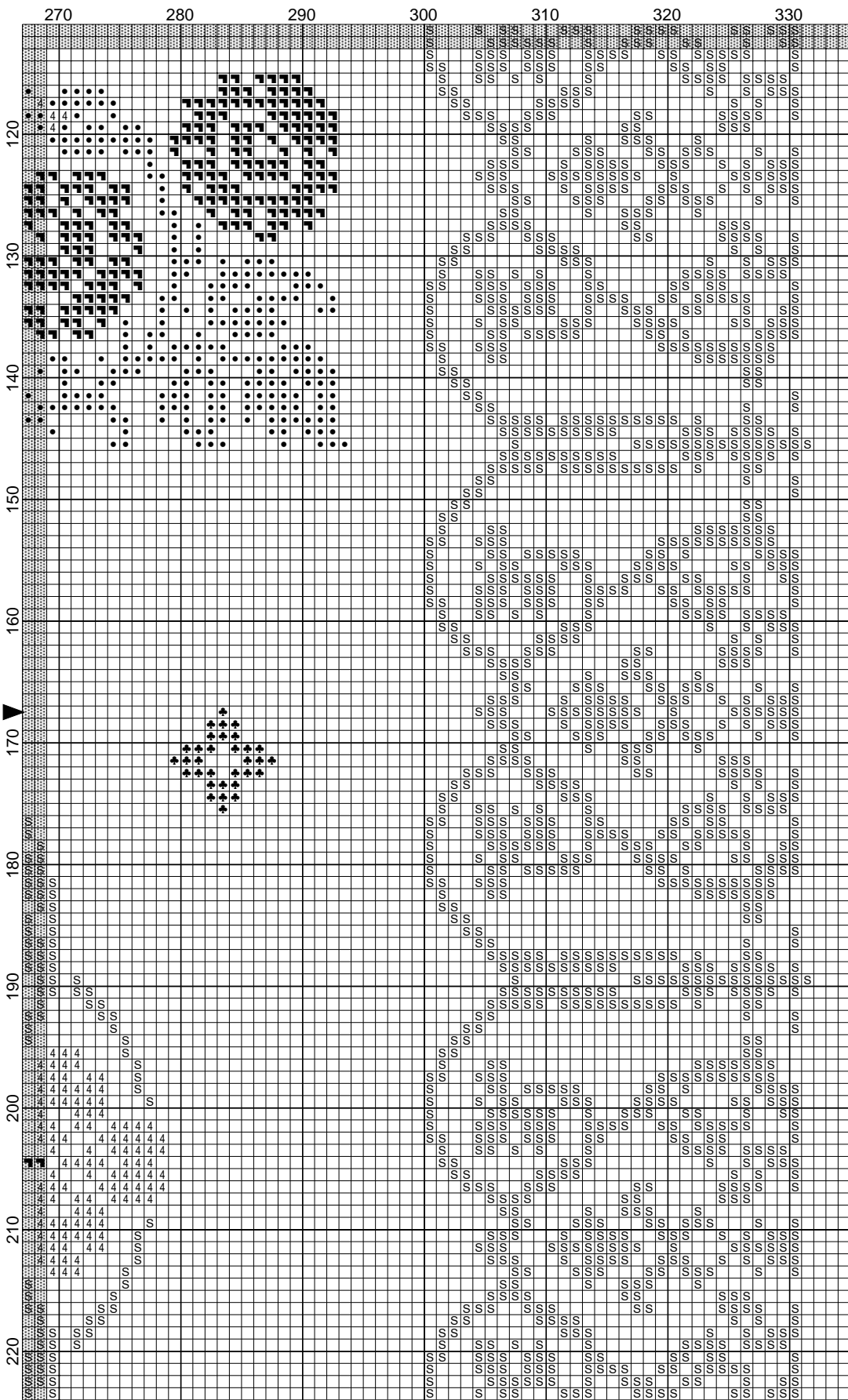
, Licensed to: Stephanie

G is For Garden Sampler by S Twillman



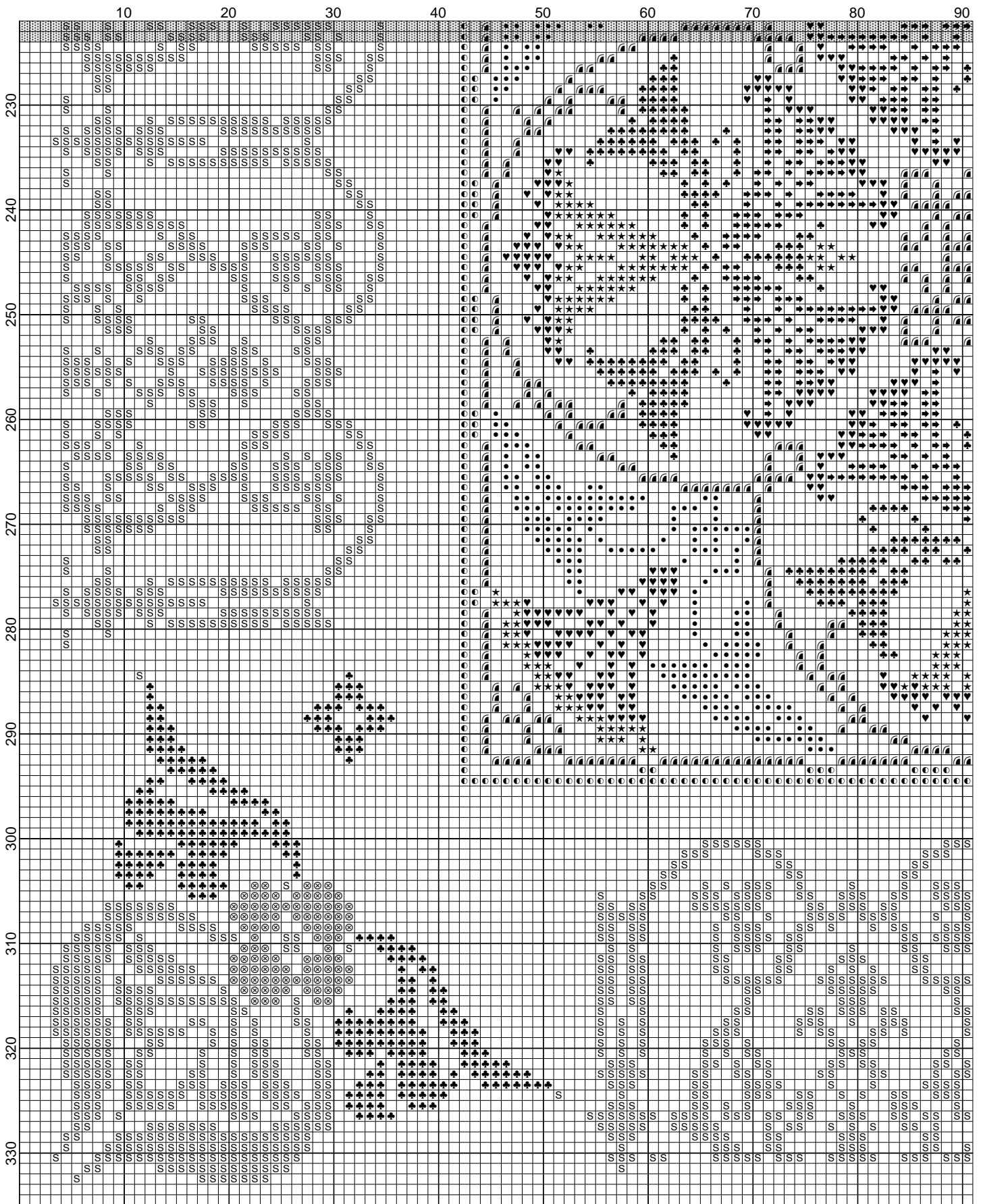
, Licensed to: Stephanie

G is For Garden Sampler by S Twillman



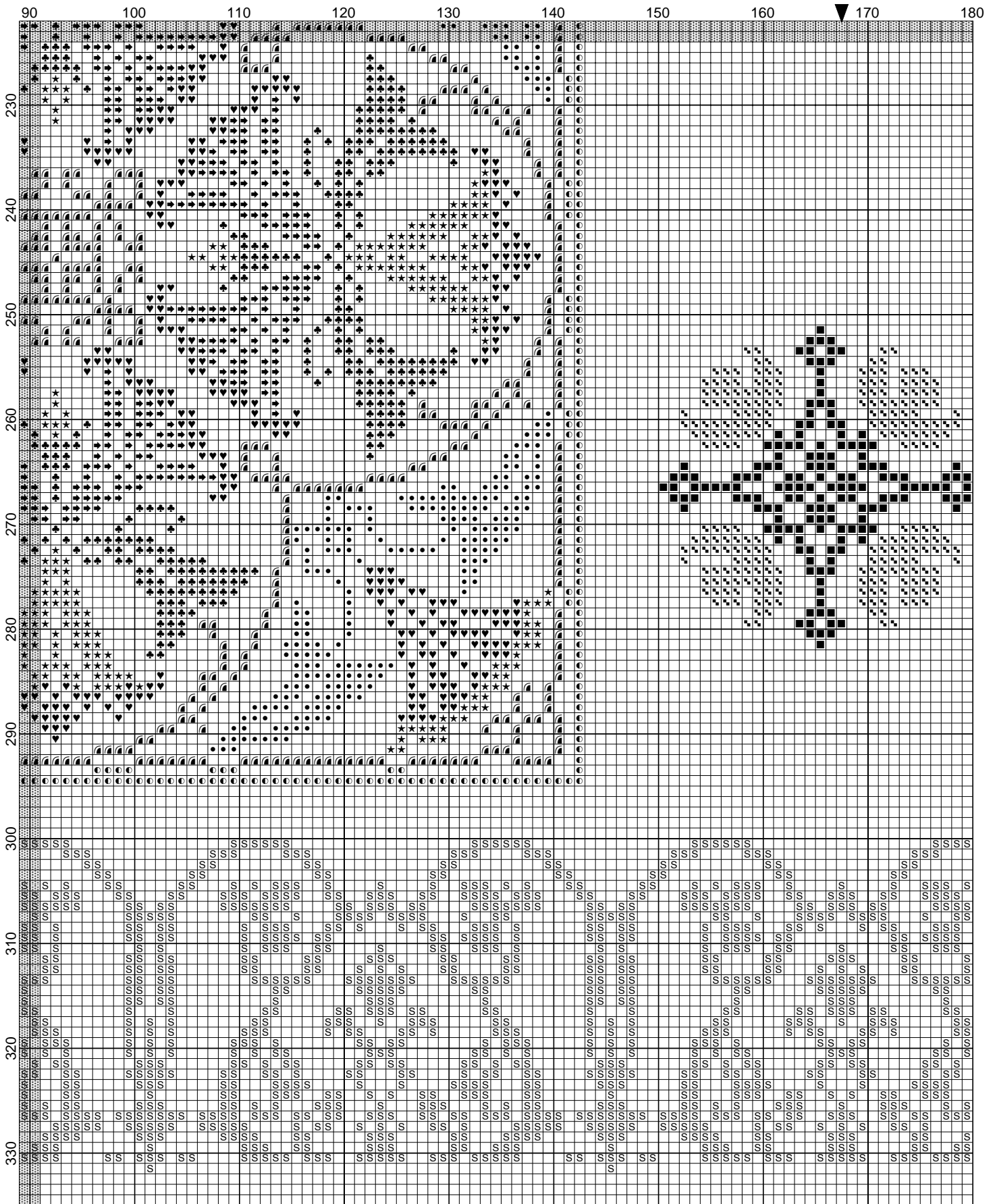
, Licensed to: Stephanie

G is For Garden Sampler by S Twillman



, Licensed to: Stephanie

G is For Garden Sampler by S Twillman



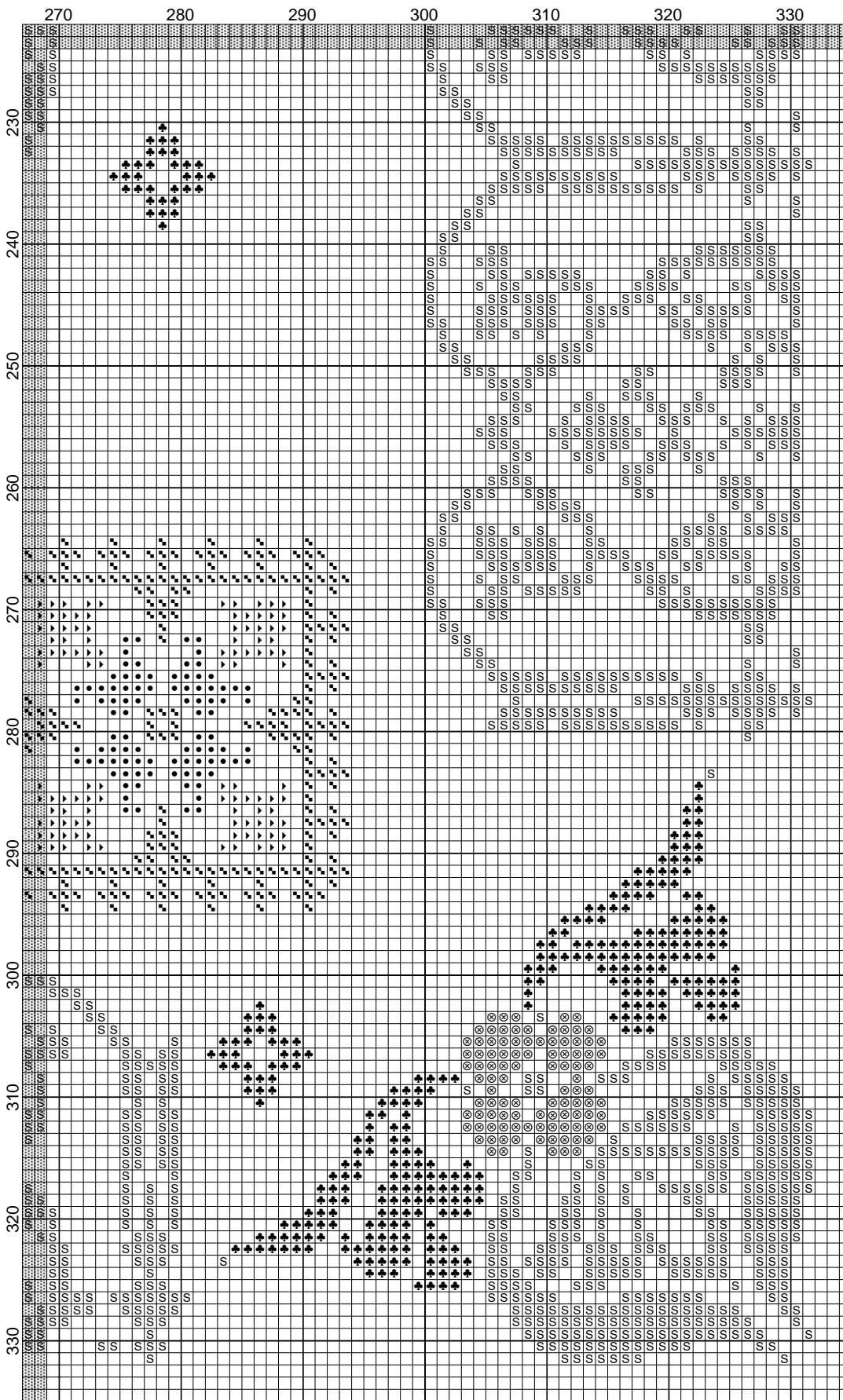
, Licensed to: Stephanie

G is For Garden Sampler by S Twillman



, Licensed to: Stephanie

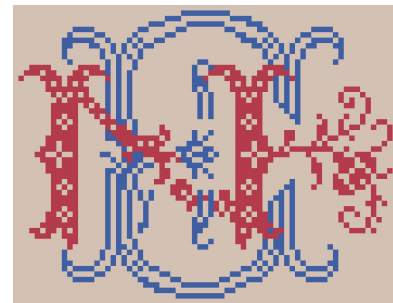
G is For Garden Sampler by S Twillman



















, Licensed to: Stephanie

G is For Garden Sampler

Author: S Twillman
Company: Nouveau Encore Designs
Website: www.nouveauencore.com
Grid Size: 335W x 335H
Design Area: 23.50" x 23.57" (329 x 330 stitches)



Legend:

 [2] DMC 3325 baby blue - lt	 [2] DMC 3726 antique mauve - dk	 [2] DMC 370 mustard - md
 [2] DMC 3755 baby blue	 [2] DMC 316 antique mauve - md	 [2] DMC 833 golden olive - lt
 [2] DMC 334 baby blue - md	 [2] DMC 3727 antique mauve - lt	 [2] DMC 831 golden olive - md
 [2] DMC 322 baby blue - dk	 [2] DMC 3052 green gray - md	 [2] DMC 3012 khaki green - md
 [2] DMC 3042 antique violet - lt	 [2] DMC 3051 green gray - dk	
 [2] DMC 3041 antique violet - md	 [2] DMC 371 mustard	

Backstitch Lines:

 DMC-3726 antique mauve - dk  DMC-3051 green gray - dk

The shaded areas are for page to page matching. DO NOT STITCH.

Many of these motifs came from this blog:

<http://myauntsattic.web-log.nl/>

and this sampler is distributed with the permission of the web-log owner Lilian Kok.

Feel free to stitch it in the assigned colors, or go monochrome or use an over-dyed floss.

The floss requirements are 1 skein for each color shown except:

DMC 3051 (2)
DMC 3052 (2)
DMC 831 (6)

If stitching all in monochrome or a single overdyed the total numbers of stitches in the design is approximately 30255. Use this info to determine how much fiber to purchase.

There are several stitch calculators on the web including one at Vikki Clayton's Hand dyed fibers site. Her silks are highly recommended. See them at:

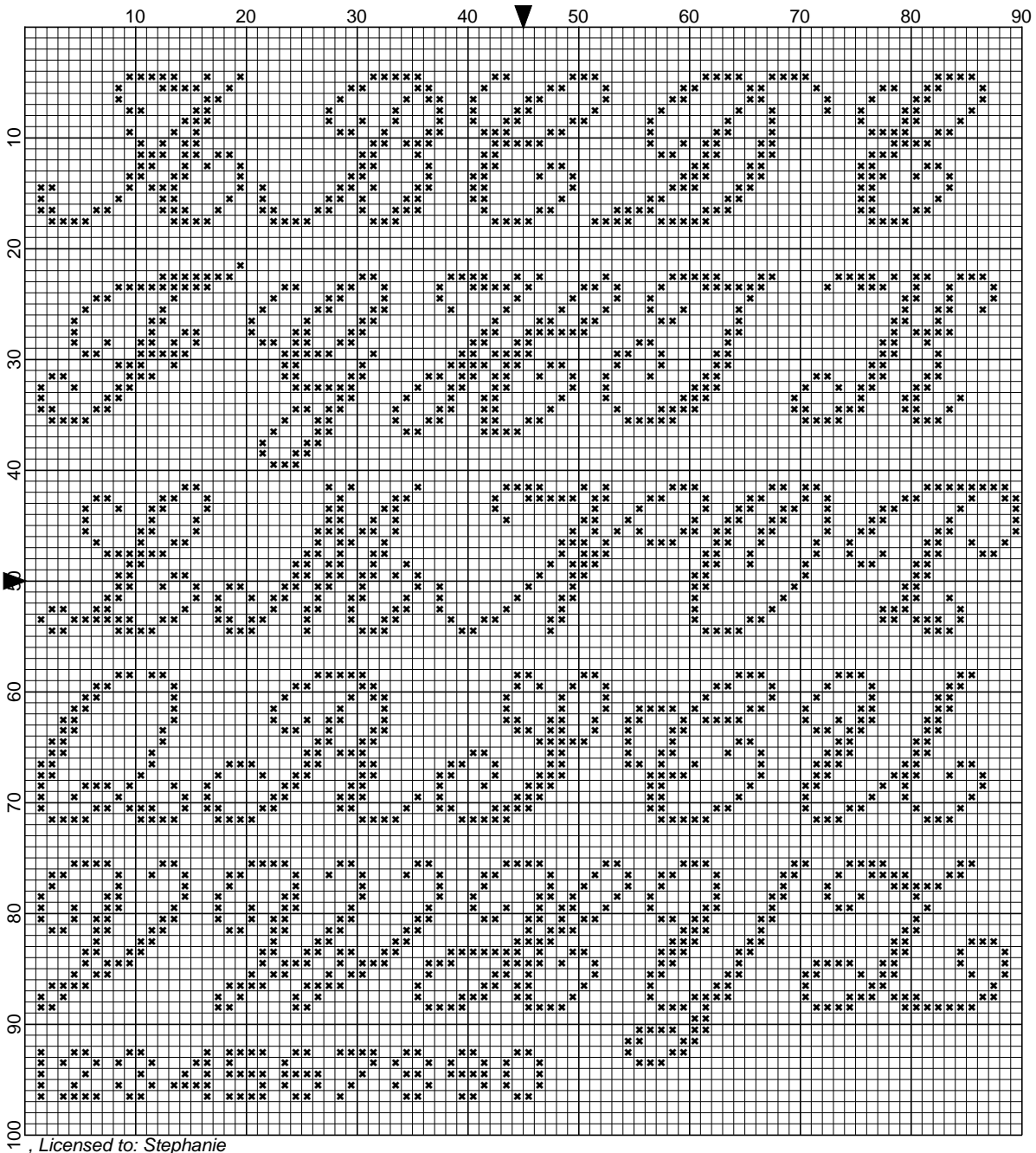
www.hand-dyedfibers.com

Enjoy!

Stephanie

www.nouveauencore.com

14 st script alphabet by S Twillman



Legend:
x ■ DMC-310

, Licensed to: Stephanie